

# Cancer in the workplace: other support

*A guide for managers and human resources professionals*

Support is available from a wide range of organisations. Cancer Council offers various support services, which are free of charge for eligible people with cancer and their family, friends and co-workers. There are also specific resources available for carers.

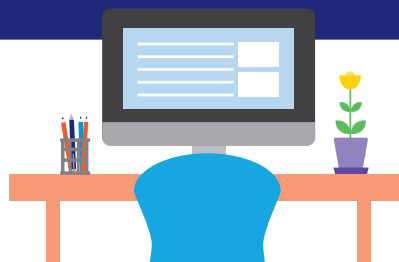


## Support from Cancer Council

<b>Cancer Council 13 11 20 Information and Support Service</b>	<p>This confidential telephone service is staffed by trained health professionals who can provide information about any aspect of cancer. Our 13 11 20 consultants can send you printed information, connect you with counselling and support services in your local area, and provide emotional support.</p> <p><b>13 11 20</b></p>
<b>Your local Cancer Council website</b>	<p>Provides evidence-based information about more than 40 types of cancer, as well as information about cancer treatment and side effects, living with cancer, prevention, research and advocacy. Information can be read online or downloaded as PDFs. You can also find links to a range of support services for people affected by cancer.</p> <p>► See page 3 for addresses.</p>
<b>Cancer Council Legal, Financial and Workplace Referral Services</b>	<p>Programs that can connect people affected by cancer with a legal, financial or workplace professional for advice (the advice is free for eligible clients). Available in most states and territories.</p> <p><b>13 11 20</b></p>
<b>Cancer Council Online Community</b>	<p>This site hosts a moderated online community for people affected by cancer, their families and carers. It is a safe place to connect with others and chat about treatment, specific cancer types, carers' issues, survivorship, and grief and loss.</p> <p><b><a href="http://cancercouncil.com.au/OC">cancercouncil.com.au/OC</a></b></p>
<b>Cancer Council's podcast series</b>	<p><i>The Thing About Cancer</i>, Cancer Council's podcast series, provides information and insights for anyone affected by cancer.</p> <p><b><a href="http://cancercouncil.com.au/podcasts">cancercouncil.com.au/podcasts</a></b></p>
<b>Cancer Council resources for workers and employers</b>	<p>Cancer and its treatment can affect many aspects of a person's life, including work. These resources provide information for workers and employers about managing work after a cancer diagnosis. Visit your local Cancer Council website for these resources.</p> <p>► See page 3 for addresses.</p>

### Support from other organisations

You can find many useful resources online, but not all websites are reliable. These websites are good sources of support and information.



Organisation	Description	Contact details
<b>Australian Human Rights Commission</b>	Receives complaints about discrimination and bullying in the workplace, and promotes fairness.	<a href="http://humanrights.gov.au">humanrights.gov.au</a> 1300 656 419
<b>Beyond Blue</b>	Offers online and phone support to people affected by anxiety and depression.	<a href="http://beyondblue.org.au">beyondblue.org.au</a> 1300 224 636
<b>Cancer Australia</b>	Provides information about cancer control and care.	<a href="http://canceraustralia.gov.au">canceraustralia.gov.au</a>
<b>Carer Gateway</b>	Provides practical information and resources for carers, and links to support services, including respite care. There is also information for working carers.	<a href="http://carergateway.gov.au">carergateway.gov.au</a> 1800 422 737
<b>Services Australia (including Centrelink)</b>	Offers financial support for people with a long-term illness and for primary carers.	<a href="http://servicesaustralia.gov.au">servicesaustralia.gov.au</a> 132 717
<b>Fair Work Commission</b>	The national workplace tribunal. Helps resolve issues at work and can also hear workplace bullying claims.	<a href="http://fwc.gov.au">fwc.gov.au</a> 1300 799 675
<b>Fair Work Ombudsman</b>	Information on pay, National Employment Standards, leave, termination/dismissal and complaints.	<a href="http://fairwork.gov.au">fairwork.gov.au</a> 13 13 94
<b>JobAccess</b>	Provides information and assistance to support the employment of people with a disability, including cancer.	<a href="http://jobaccess.gov.au">jobaccess.gov.au</a> 1800 464 800
<b>National Disability Insurance Scheme</b>	Provides supports and services for people with a permanent and significant disability.	<a href="http://ndis.gov.au">ndis.gov.au</a> 1800 800 110
<b>Office of the Australian Information Commissioner</b>	National body that investigates privacy infringements and handles privacy complaints.	<a href="http://oaic.gov.au">oaic.gov.au</a> 1300 363 992
<b>Work After Cancer</b>	Website created by Flinders University and funded by the Australian Government, with information about working during cancer treatment and returning to work after treatment.	<a href="http://workaftercancer.com.au">workaftercancer.com.au</a>

Specific types of cancer	
Asbestos and Dust Diseases Research Institute	<a href="http://addri.org.au">addri.org.au</a>
Australian Gynaecological Cancer Foundation	<a href="http://agcf.org.au">agcf.org.au</a>
Australian Thyroid Foundation	<a href="http://thyroidfoundation.org.au">thyroidfoundation.org.au</a>
Brain Tumour Alliance Australia	<a href="http://btaa.org.au">btaa.org.au</a>
Breast Cancer Network Australia	<a href="http://bcna.org.au">bcna.org.au</a>
Bowel Cancer Australia	<a href="http://bowelcanceraustralia.org">bowelcanceraustralia.org</a>
GI Cancer Institute (gastrointestinal cancers)	<a href="http://gicancer.org.au">gicancer.org.au</a>
Head and Neck Cancer Australia	<a href="http://headandneckcancer.org.au">headandneckcancer.org.au</a>
Kidney Health Australia	<a href="http://kidney.org.au">kidney.org.au</a>
Leukaemia Foundation	<a href="http://leukaemia.org.au">leukaemia.org.au</a>
Lung Foundation Australia	<a href="http://lungfoundation.com.au">lungfoundation.com.au</a>
Melanoma Institute Australia	<a href="http://melanoma.org.au">melanoma.org.au</a>
Myeloma Australia	<a href="http://myeloma.org.au">myeloma.org.au</a>
Ovarian Cancer Australia	<a href="http://ovariancancer.net.au">ovariancancer.net.au</a>
Pancare Foundation	<a href="http://pancare.org.au">pancare.org.au</a>
Prostate Cancer Foundation of Australia	<a href="http://prostate.org.au">prostate.org.au</a>
Rare Cancers Australia	<a href="http://rarecancers.org.au">rarecancers.org.au</a>

Children and teenagers	
Cancer Hub (Camp Quality, CanTeen and Redkite) – a one-stop shop to support families impacted by cancer	<a href="http://cancerhub.org.au">cancerhub.org.au</a>
Starlight Children's Foundation	<a href="http://starlight.org.au">starlight.org.au</a>

Local Cancer Councils	
Call Cancer Council 13 11 20 for more information about cancer in the workplace. You can request free copies of our booklets on cancer treatments and side effects, or download digital copies from your local Cancer Council website.	
ACT	<a href="http://actcancer.org">actcancer.org</a>
NSW	<a href="http://cancercouncil.com.au">cancercouncil.com.au</a>
NT	<a href="http://cancer.org.au/nt">cancer.org.au/nt</a>
QLD	<a href="http://cancerqld.org.au">cancerqld.org.au</a>
SA	<a href="http://cancersa.org.au">cancersa.org.au</a>
TAS	<a href="http://cancer.org.au/tas">cancer.org.au/tas</a>
VIC	<a href="http://cancervic.org.au">cancervic.org.au</a>
WA	<a href="http://cancerwa.asn.au">cancerwa.asn.au</a>
Australia	<a href="http://cancer.org.au">cancer.org.au</a>
<p><b>More information</b> – Visit your local Cancer Council website to download more workplace fact sheets. Topics covered include <i>Talking to an employee about cancer</i> and <i>Creating cancer-friendly workplaces</i>.</p>	

### Acknowledgements

This fact sheet has been developed by Cancer Council NSW on behalf of all other state and territory Cancer Councils as part of a National Cancer Information Subcommittee initiative. We thank the expert and consumer reviewers of this fact sheet and also the experts, consumers and editorial teams who have worked on current and previous versions of this information.

[See our full list of expert and consumer reviewers.](#)

This fact sheet is funded through the generosity of the people of Australia. To support Cancer Council, call your local Cancer Council or visit your local website.



Cancer Council acknowledges Traditional Custodians of Country throughout Australia and recognises the continuing connection to lands, waters and communities. We pay our respects to Aboriginal and Torres Strait Islander cultures and to Elders past, present and emerging.

